

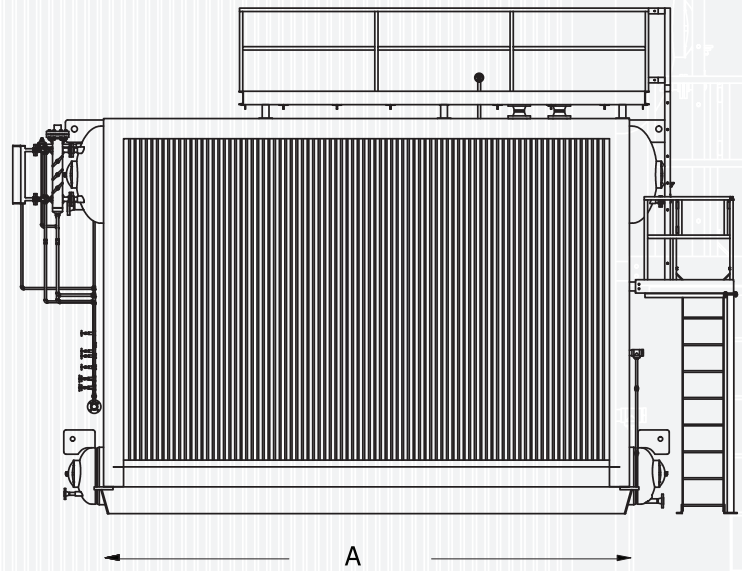
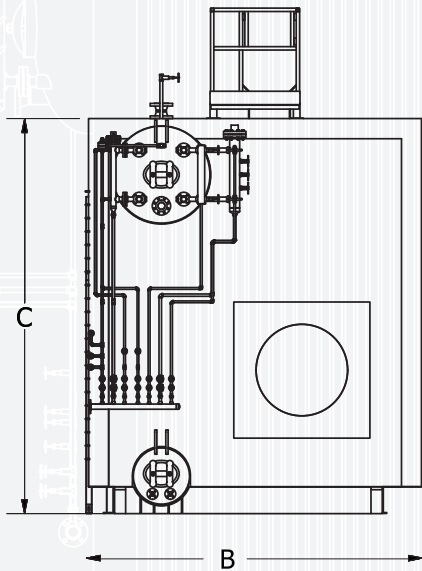
# **SUPERIOR** **BOILER**

*BUILT TO **OUTPERFORM***



# **DENALI**

***D-TYPE WATERTUBE BOILER***



- + Capacities from 10,000 - 250,000 lb/hr
- + Design pressure up to 1,200 psig
- + Superheated steam temperature up to 900°F
- + Gas outlet configuration: left or right side
- + Available as a Modular Boiler System

	LENGTH (A)	WIDTH (B)	HEIGHT (C)
30,000 LB/HR	185 in.	120 in.	144 in.
40,000 LB/HR	199 in.	126 in.	156 in.
50,000 LB/HR	219 in.	126 in.	156 in.
60,000 LB/HR	225 in.	126 in.	168 in.
70,000 LB/HR	258 in.	132 in.	168 in.
80,000 LB/HR	277 in.	132 in.	174 in.
90,000 LB/HR	297 in.	136 in.	178 in.
100,000 LB/HR	319 in.	141 in.	179 in.
125,000 LB/HR	358 in.	142 in.	190 in.
150,000 LB/HR	417 in.	146 in.	190 in.
175,000 LB/HR	468 in.	148 in.	190 in.
200,000 LB/HR	510 in.	150 in.	190 in.



Superior Boiler leads the way in the design and manufacture of industrial and commercial boilers for all market segments. With over 100 years' experience in the industry, our customers don't just trust what we build, they trust the people who build them. Complete boiler systems built to exacting standards, **made in the USA**, and installed throughout the world.