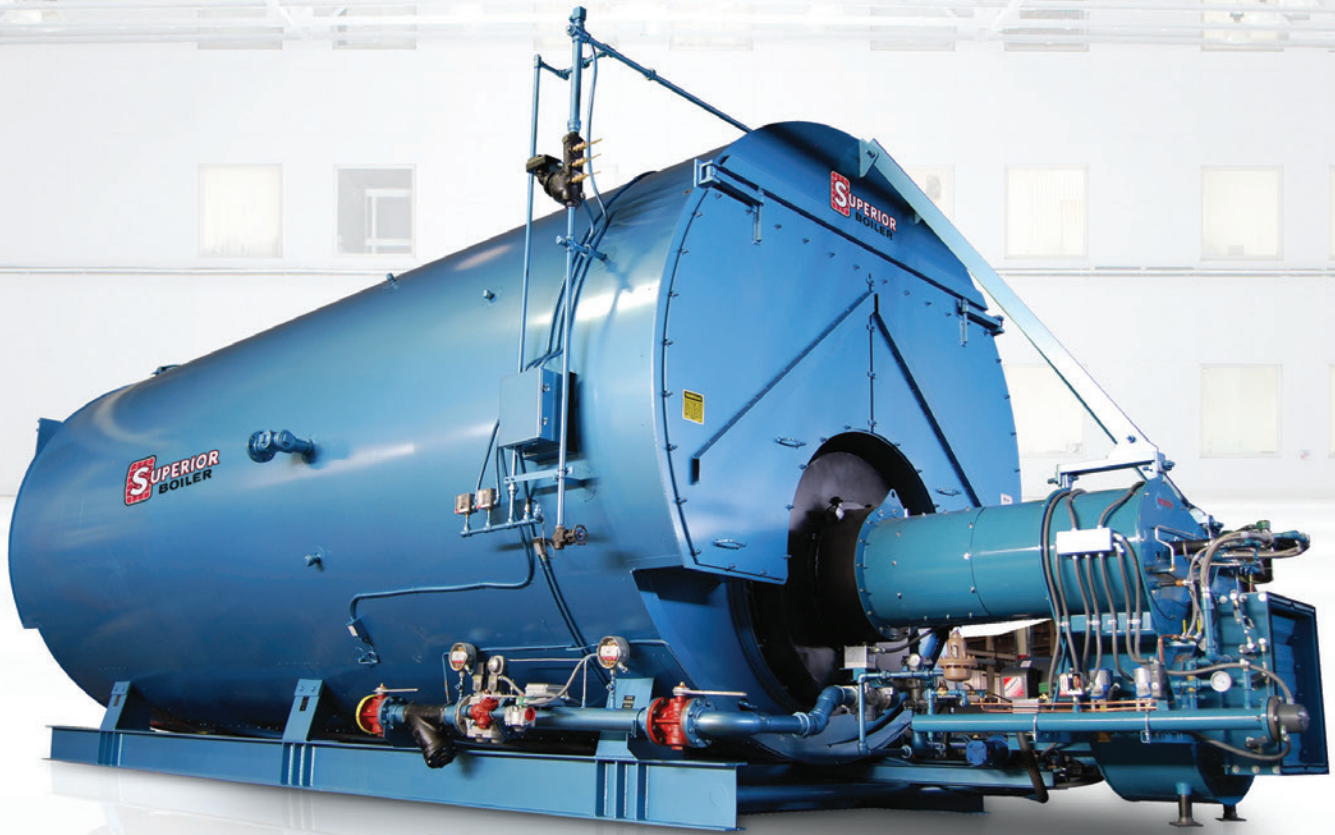


SUPERIOR **BOILER**

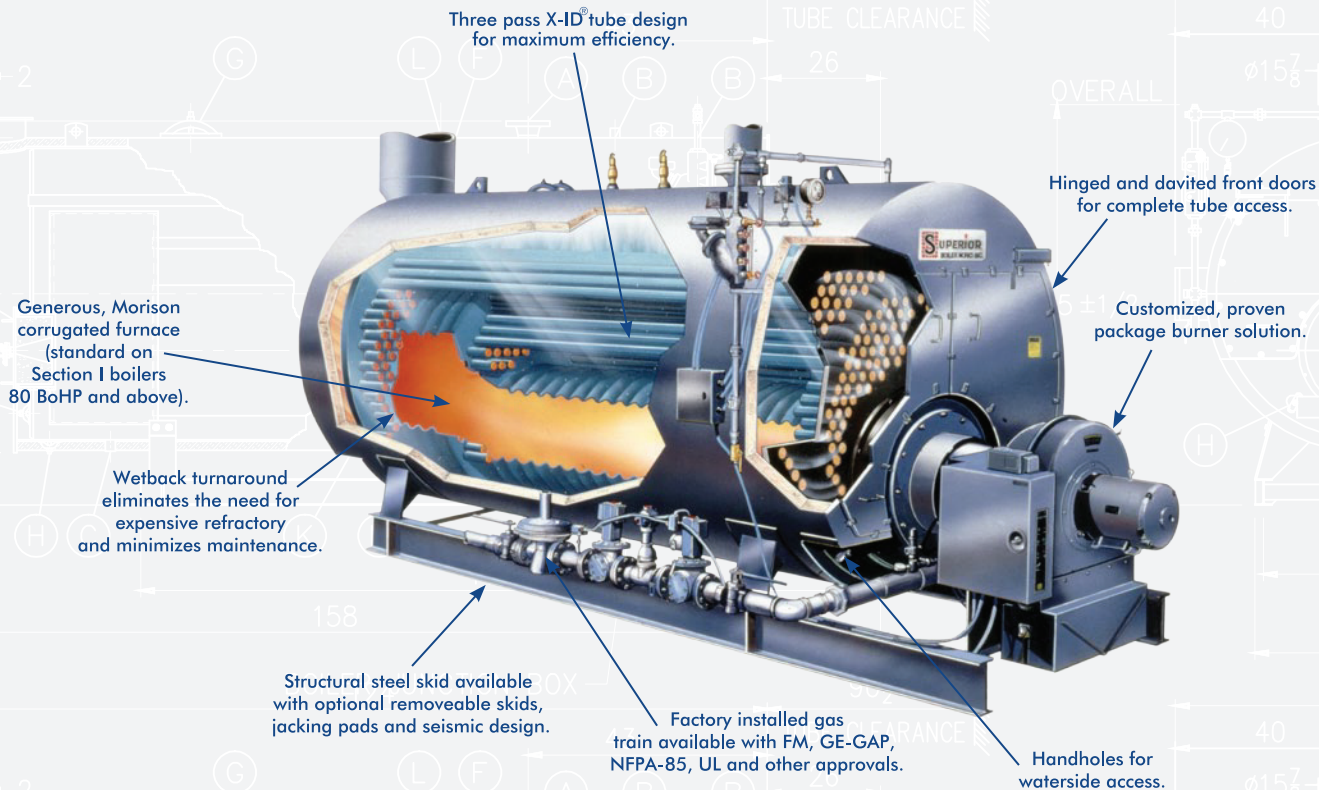
BUILT TO **OUTPERFORM**



SUPER SEMINOLE

3-PASS WETBACK FIRETUBE BOILER

Designed for Maximum Efficiency, Reliability and Durability
in Today's Most Demanding Environments.



	70	80	100	125	150	200	250	300	350	400	500	600	700	750	800	900	1000
UNIT MODEL NUMBER	350	400	500	625	750	1000	1250	1500	1750	2000	2500	3000	3500	3750	4000	4500	5000
OUTPUT (MBH)	2343	2678	3348	4184	5021	6695	8369	10043	11716	13390	16378	20085	23433	25106	26780	30128	33475
STEAM (LBS/HR)	2415	2760	3450	4313	5175	6900	8625	10350	12075	13800	17250	20700	24150	25875	27600	31050	34500
INPUT GAS (1000 BTU/FT)	2929	3348	4184	5230	6276	8369	10461	12553	14645	16738	20922	25106	29291	31383	33475	37659	41844
INPUT #2 OIL (140,000 BTU/GAL)	20.91	23.91	29.88	37.35	44.83	59.77	74.72	89.66	104.60	119.55	149.44	179.33	209.21	224.16	239.10	269.00	298.88
HEATING SURFACE (FT ²)	364	412	510	643	765	1022	1282	1525	1765	2019	2517	3017	3548	3783	4040	4541	5040
FURNACE VOLUME (FT ³)	18.93	22.51	29.66	34.26	42.39	52.18	68.81	84.37	95.32	115.17	148.7	171.45	183.76	192.05	206.57	236.99	259.82
DESIGN PRESSURE*	250	250	250	250	250	250	250	250	250	250	250	250	250	250	250	250	250
LENGTH OVERALL (IN)	158	171	197	183	205	210	241	270	278	263	305	301	297	305	319	324	343
WIDTH OVERALL WITH TRIM (IN)	73	73	73	80	80	90	90	90	99	110	110	116	124	124	124	132	132
HEIGHT OVERALL (IN)	85	85	85	92	92	102	102	102	108	119	119	125	133	133	133	141	141
SHIPPING WEIGHT APPROX 15 PSI**	8400	9100	10400	11500	12900	17500	20300	23000	25800	29200	35300	39200	43100	44900	47200	51700	55800
SHIPPING WEIGHT APPROX 150 PSI**	9300	10000	11300	12800	14200	19400	22300	24900	28700	33200	38500	42800	46600	48300	50700	60400	65200

*Higher Pressures are available upon request. **Shipping Weights are approximate. Dimensions are subject to change without notice. Certified drawings are available.

- + 3-Pass wetback design
- + Pressures from 15-300 psi steam and 30-160 psi hot water
- + Corrugated furnaces on ASME Section I high pressure boilers
- + Sizes from 70-2,500 BoHP
- + Large furnace and rear turnaround volume for complete combustion
- + Packaged with gas, oil, or combination gas & oil Burner

