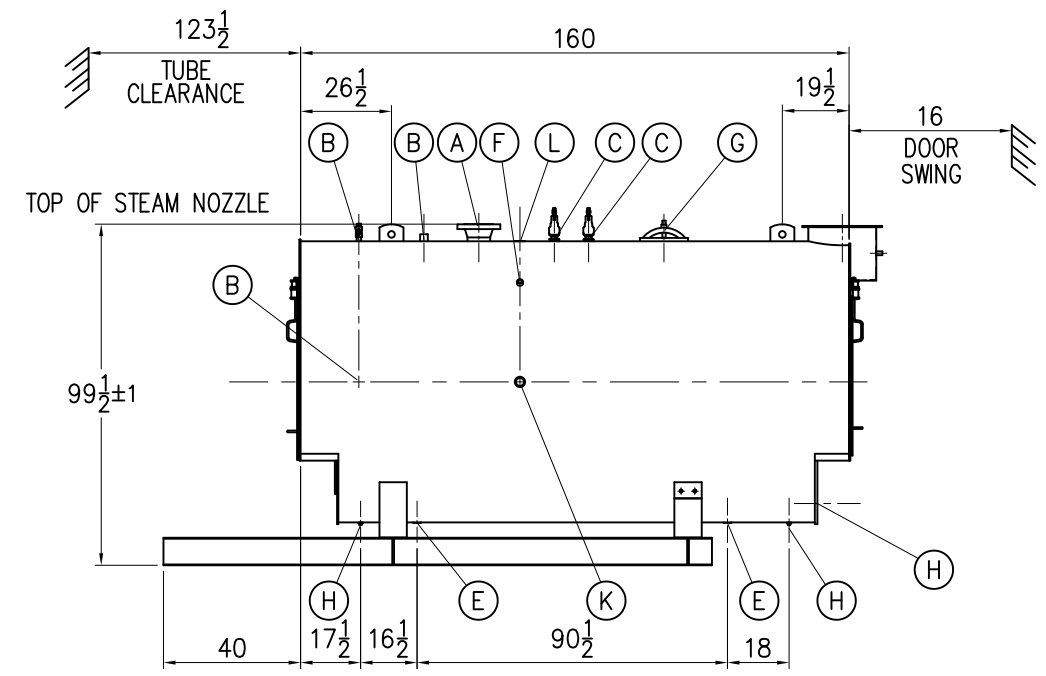
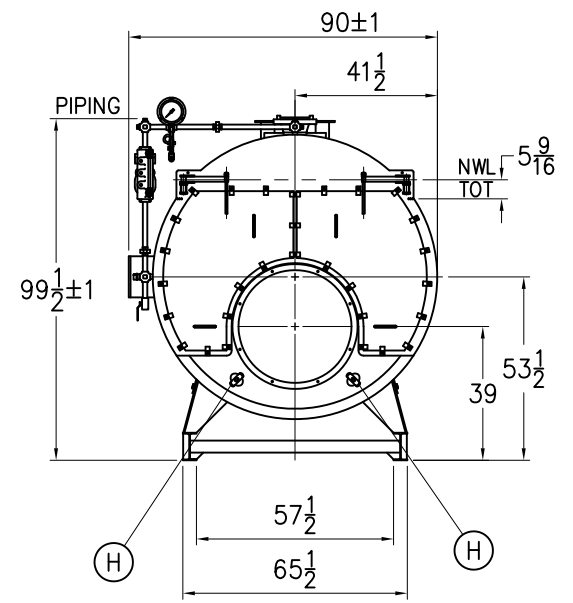
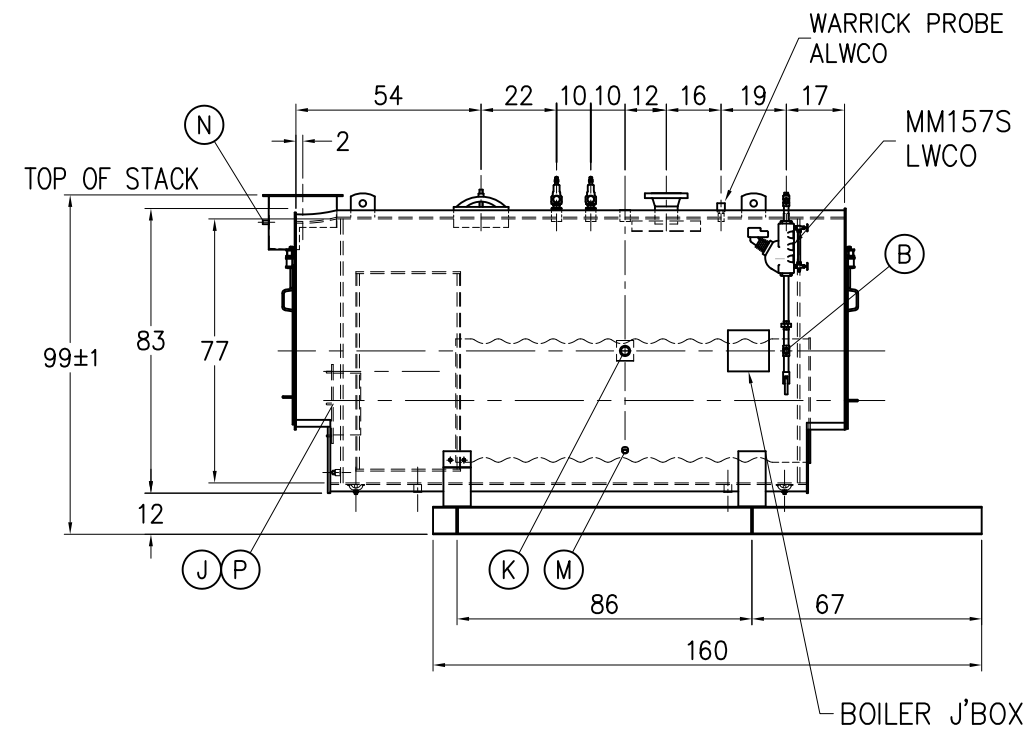


WATER LEVEL SEQUENCE



BOILER CONNECTIONS		RATINGS & CAPACITIES		LTR	DATE	REVISION	BY	REPRESENTATIVE:
A.(1) STEAM OUTLET	6" 300# FLANGE	HORSEPOWER	200*					?
B.(4) LWCO	1" NPT	DESIGN PRESSURE	150 PSIG STEAM					
C.(2) SAFETY VALVE	2" NPT	GROSS OUTPUT	6695 MBH*					
D.( ) SAFETY VALVE		STEAM (FROM & AT 212°F)	6900 Lbs/Hr*					
E.(2) BOILER BLOWDOWN	1 1/4" NPT	HEAT RELEASE: (FURNACE ONLY)	157160 BTU/CuFt*					
F.(1) SURFACE BLOWDOWN	1" NPT	RATED INPUT	8369 MBH*					
G.(1) MANWAY	12" x 16"	HEATING SURFACE (ASME)	1023 SqFt					
H.(5) HANDHOLE	3" x 4"	FURNACE HEATING SURFACE	80.83 SqFt					
J.(1) CLEANOUT	17" ID	FURNACE VOLUME	53.25 CuFt					
K.(2) FEEDWATER	2" NPT	TURNAROUND VOLUME	42.09 CuFt					
L.(1) AUXILIARY	2" NPT	STEAMING VOLUME	27.98 CuFt					
M.(1) LOW FIRE HOLD	1" NPT	STEAM RELEASE AREA	48.01 SqFt					
N.(1) STACK TEMP	1/2" NPT	WATER CAPACITY:						
P.(1) SIGHTPORT	1" PIPE	(FULL)	1,590 Gal @ 13,227 Lbs					
Q.( )		(NWL)	1,381 Gal @ 11,485 Lbs					
R.( )		SHIPPING WEIGHT:	19,000 Lbs					
S.( )								

NOTES		SUPERIOR BOILER		CHECKED BY	DATE
1. ALL CONTROLS MOUNTED AS PER SPECIFICATION SHEET. 2. SPECIFICATION SHEET TAKES PRIORITY OVER R & D SHEET. 3. BOILER DESIGN CODE ASME SECTION I. 4. BOILER INSULATED WITH 2" - 8# DENSITY MINERAL FIBER INSULATION WITH 22 GAUGE STEEL JACKET. 5. ALL DIMENSIONS ARE ±1/2" UNLESS OTHERWISE NOTED. *6. HORSEPOWER & RELATED INFO BASED ON 5 SqFt FIRING.		SUPER SEMINOLE BOILER MODEL X6-5-1000-S150		?	
				DRAWING No	
SCALE		DRAWING No			
1/56		?			

THIS DRAWING IS THE PROPERTY OF SUPERIOR BOILER WORKS & SHALL NOT BE REPRODUCED IN PART OR IN WHOLE, & NONE OF ITS INFORMATION SHALL BE REVEALED WITHOUT PERMISSION OR TO THE DETRIMENT OF THE OWNER. IT MUST BE RETURNED UPON REQUEST.