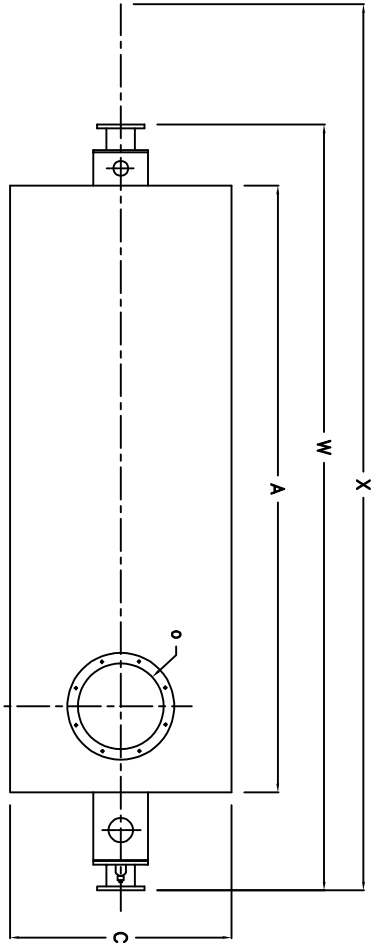
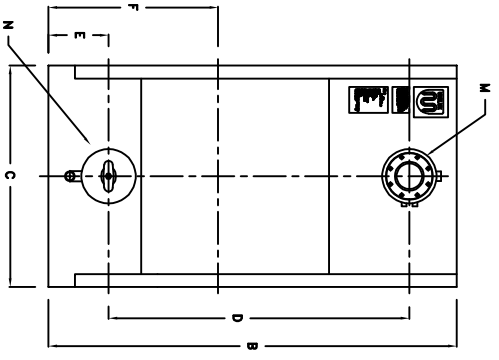


# ZF1200W-XP

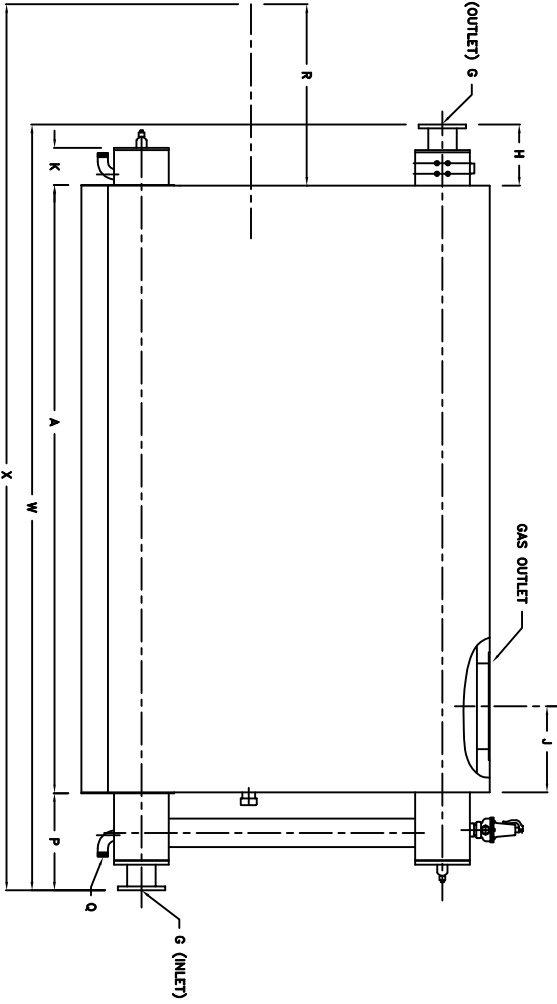
CHIMNEY FLANGE DIMS:  
 O.D. = 25"  
 I.D. = 20-1/4"  
 B.C.D = 22-1/2"  
 NO. OF HOLES = 8  
 HOLE DIAMETER = 0.53"



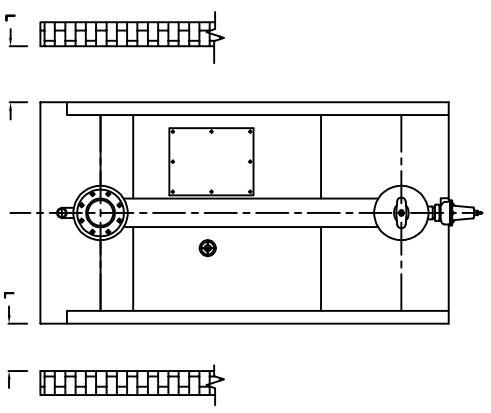
PLAN



FRONT VIEW



SIDE VIEW



REAR VIEW

BOILER MODEL - ZF1200W-XP		
	INCHES	METRIC
A	141 1/2	3594
B	95	2413
C	51 1/2	1308
D	70	1778
E	14	356
F	39 1/2	1003
G	8	192
H	14 1/4	362
I	20	508
J	8 5/8	219
K	34	864
L	12 3/4	324
M	12 3/4	324
N	12 3/4	324
O	20	508
P	22 5/8	575
Q	2	51
R	TBD	TBD
W	178 3/8	4531
X	TBD	TBD


NOTE: DIMENSIONS SUBJECT TO CHANGE WITHOUT NOTICE.  
 CONSULT FACTORY FOR CERTIFIED DIMENSIONS.

**UNILUX ADVANCED MFG., LLC**  
 30 COMMERCE PARK DRIVE  
 NISKAYUNA, NY 12309  
 Ph: (518) 344-7490

THIS DRAWING IS THE PROPERTY OF UNILUX ADVANCED MFG., LLC. ALL RIGHTS FOR REPRODUCTION, MODIFICATION, OR DISTRIBUTION ARE RESERVED BY UNILUX ADVANCED MFG., LLC.

PROJECT: -  
 LOCATION: ZF1200W-XP  
 Model Sizes: ZF1200W-XP  
 BURNER: -  
 ELECTRICAL: SUPPLY PSI -

Drawn By : EAM GAVIGAN Date : 10OCT24  
 Checked By : BRENDAN LEE Date : 10OCT24  
 Drawing No. : ZF1200W-XP - SUBMITTAL Scale : 1  
 File No. : ZF1200W-XP - SUBMITTAL REV.: 00



REVISIONS	DATE	BY	Rev No.